

# Mulberry Weatherproof

**When U.S.-made weatherproof products are specified for the job or needed to meet an ARRA requirement, make Mulberry your first choice!**

**Practically every weatherproof product described in this catalog is manufactured right here in the USA!**

In addition, we offer:

- Superior quality casting, tapping and finishing
- The industry's most comprehensive weatherproof line, with over 350 items in stock and ready for immediate shipment
- Special configurations and colors
- Unique product features such as the attached rotating lugs on our 1-gang weatherproof boxes that are designed to speed installation



Quality products designed to protect wiring devices, switches and other electrical connections from dirt, dust and moisture. Choose from a wide assortment of:

- Boxes
- In-Use Covers
- Covers
- Lampholders
- Photocontrols



# Mulberry Single Gang Box

*The most versatile weatherproof box in the industry*

Superior Quality • U.S. Made • ARRA Compliant

## Rotating Lugs

Permanently Attached Lugs rotate for maximum mounting versatility—available when needed or out of the way when not.

## Superior Powder Finish

State-of-the-art powder coat paint finish assures maximum weatherability.

Available in Gray, White, Bronze or Black.



Cat. No. 30203

## Easy Access Ground Screw

Tapped ground screw hole conveniently located along the surface of our mounting strap provides easier ground screw installation.

## Heavy-Duty Mounting Straps

Reinforced and securely fastened mounting straps provide the most durable design in the industry.

Patented mounting design allows strap to exceed all applicable UL pull-tests. (U.S. Patent No. 7,232,951)

## Permanently Attached Lugs

No more detachable lugs!

Never drop, lose or install a lug again.

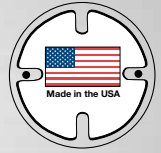
Speeds installation!



# 1-Gang Boxes

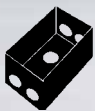
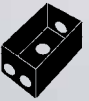
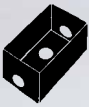
Suitable for wet locations

- For use in branch circuit wiring in wet, damp or dry locations.
- All 1-gang boxes available with or without mounting lugs.
- When lugs are made available, they are permanently attached and swivel for maximum mounting versatility.
- Pre-tapped ground screw hole is easily accessible and located along the surface of the mounting strap.
- Heavy duty mounting straps exceed all UL pull-tests.
- Made from heavy-duty die-cast aluminum; .094 inches thick.
- 4.5 in. high x 2.75 in. wide x 2.0 in. deep.
- Superior powder coat finish assures maximum weatherability.
- Ground screw and 2 close-up plugs come with each box.
- UL Listed, NEMA 3R Rated.
- All of the boxes on pages B4 and B5 are made in the U.S.A.



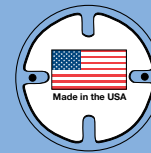
## With Permanently Attached Mounting Lugs

Catalog No.	No. Outlets	Location	Hub Size	Color	Lugs	Cubic Capacity	Carton Quantity	Weight per 100 units
<b>30203</b>	3	1 in each end, 1 in back	1/2"	Gray	Yes	18.3	25	52 lbs.
<b>30203B</b>	3	1 in each end, 1 in back	1/2"	Black	Yes	18.3	25	52 lbs.
<b>30203W</b>	3	1 in each end, 1 in back	1/2"	White	Yes	18.3	25	52 lbs.
<b>30203Z</b>	3	1 in each end, 1 in back	1/2"	Bronze	Yes	18.3	25	52 lbs.
<b>30206</b>	3	1 in each end, 1 in back	3/4"	Gray	Yes	18.3	25	60 lbs.
<b>30206W</b>	3	1 in each end, 1 in back	3/4"	White	Yes	18.3	25	60 lbs.
<b>30206Z</b>	3	1 in each end, 1 in back	3/4"	Bronze	Yes	18.3	25	60 lbs.
<b>30209</b>	4	2 in 1 end, 1 in the other, 1 in back	1/2"	Gray	Yes	18.0	25	60 lbs.
<b>30209W</b>	4	2 in 1 end, 1 in the other, 1 in back	1/2"	White	Yes	18.0	25	60 lbs.
<b>30209Z</b>	4	2 in 1 end, 1 in the other, 1 in back	1/2"	Bronze	Yes	18.0	25	60 lbs.
<b>30212</b>	4	2 in 1 end, 1 in the other, 1 in back	3/4"	Gray	Yes	18.0	25	58 lbs.
<b>30212W</b>	4	2 in 1 end, 1 in the other, 1 in back	3/4"	White	Yes	18.0	25	58 lbs.
<b>30212Z</b>	4	2 in 1 end, 1 in the other, 1 in back	3/4"	Bronze	Yes	18.0	25	58 lbs.
<b>30215</b>	5	2 in each end, 1 in back	1/2"	Gray	Yes	18.0	25	60 lbs.
<b>30215W</b>	5	2 in each end, 1 in back	1/2"	White	Yes	18.0	25	60 lbs.
<b>30215Z</b>	5	2 in each end, 1 in back	1/2"	Bronze	Yes	18.0	25	60 lbs.
<b>30218</b>	5	2 in each end, 1 in back	3/4"	Gray	Yes	18.0	25	56 lbs.
<b>30221</b>	5	1 in each end, 1 each side, 1 in back	1/2"	Gray	Yes	18.0	25	60 lbs.
<b>30224</b>	5	1 in each end, 1 each side, 1 in back	3/4"	Gray	Yes	18.0	25	58 lbs.
<b>30227</b>	6	1 in each end, 2 in 1 side, 1 in other side, 1 in back	1/2"	Gray	Yes	18.0	25	62 lbs.
<b>30228</b>	6	1 in each end, 2 in 1 side, 1 in other side, 1 in back	3/4"	Gray	Yes	18.0	25	58 lbs.

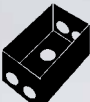
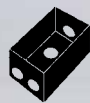
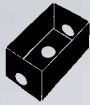


# 1-Gang Boxes

Suitable for wet locations



## Without Mounting Lugs



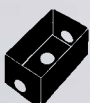
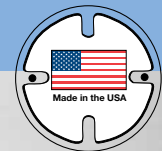
Catalog No.	No. Outlets	Location	Hub Size	Color	Lugs	Cubic Capacity	Carton Quantity	Weight per 100 units
30201	3	1 in each end, 1 in back	1/2"	Gray	No	18.3	25	52 lbs.
30201B	3	1 in each end, 1 in back	1/2"	Black	No	18.3	25	52 lbs.
30201W	3	1 in each end, 1 in back	1/2"	White	No	18.3	25	52 lbs.
30201Z	3	1 in each end, 1 in back	1/2"	Bronze	No	18.3	25	52 lbs.
30204	3	1 in each end, 1 in back	3/4"	Gray	No	18.3	25	60 lbs.
30204W	3	1 in each end, 1 in back	3/4"	White	No	18.3	25	60 lbs.
30204Z	3	1 in each end, 1 in back	3/4"	Bronze	No	18.3	25	60 lbs.
30207	4	2 in 1 end, 1 in the other, 1 in back	1/2"	Gray	No	18	25	60 lbs.
30207W	4	2 in 1 end, 1 in the other, 1 in back	1/2"	White	No	18	25	60 lbs.
30207Z	4	2 in 1 end, 1 in the other, 1 in back	1/2"	Bronze	No	18	25	60 lbs.
30210	4	2 in 1 end, 1 in the other, 1 in back	3/4"	Gray	No	18	25	58 lbs.
30210W	4	2 in 1 end, 1 in the other, 1 in back	3/4"	White	No	18	25	58 lbs.
30210Z	4	2 in 1 end, 1 in the other, 1 in back	3/4"	Bronze	No	18	25	58 lbs.
30213	5	2 in each end, 1 in back	1/2"	Gray	No	18	25	60 lbs.
30213W	5	2 in each end, 1 in back	1/2"	White	No	18	25	60 lbs.
30213Z	5	2 in each end, 1 in back	1/2"	Bronze	No	18	25	60 lbs.
30216	5	2 in each end, 1 in back	3/4"	Gray	No	18	25	56 lbs.
30219	5	1 in each end, 1 each side, 1 in back	1/2"	Gray	No	18	25	60 lbs.
30222	5	1 in each end, 1 each side, 1 in back	3/4"	Gray	No	18	25	58 lbs.
30226	6	1 in each end, 2 in 1 side, 1 in other side, 1 in back	1/2"	Gray	No	18	25	62 lbs.

WEATHERPROOF BOXES

# 1-Gang Deep Boxes

Suitable for wet locations

- For use in branch circuit wiring in wet, damp or dry locations.
- Made from heavy duty die-cast aluminum, .094" thick.
- 4.5 in. high x 2.75 in. wide x 2.625 in. deep.
- Superior powder coat finish assures maximum weatherability.
- Detachable lugs, 2 close-up plugs and self-tapping ground screw included.
- c-UL-us listed for use in the United States and Canada.
- NEMA 3R Rated.
- All of the boxes on this page are made in the U.S.A.



Catalog No.	No. Outlets	Location	Hub Size	Color	Cubic Capacity	Carton Quantity	Weight per 100 units
30583	3	1 in each end, 1 in back	1/2"	Gray	24.0	10	90 lbs.
30584	3	1 in each end, 1 in back	3/4"	Gray	24.0	10	90 lbs.
30589	3	1 in each end, 1 in back	1"	Gray	24.0	10	90 lbs.
30586	4	2 in 1 end, 1 in the other, 1 in back	1/2"	Gray	24.0	10	90 lbs.
30587	4	2 in 1 end, 1 in the other, 1 in back	3/4"	Gray	24.0	10	90 lbs.

